

NEWSMINE

April 2026



*Driving Structured **Innovation**,
Secure **Access**, and Scalable **Growth***

In This Edition

- 01. Launch of Skillmine Utils**
Developer Productivity Platform
- 02. AI-Driven Advancements**
in Auth & Security Frameworks
- 03. COMPLYment 3.0 & DataV Modernization** – Enhanced Governance and Scalable Analytics
- 04. Tech Baithak**
New Podcast Episode Now Live

APAC Activated



Skillmine Technology Enters Singapore & Australia

With rising demand across the Asia Pacific region, Skillmine is expanding its footprint with Singapore as our regional base.

This move allows us to stay closer to our customers, respond faster to evolving needs and build stronger partnerships as we explore markets like Australia, Indonesia and beyond.

Excited to begin this next phase of growth in APAC.

Tech Spotlight

AI ROI in 2026 What Leaders Are Measuring Beyond Cost Savings

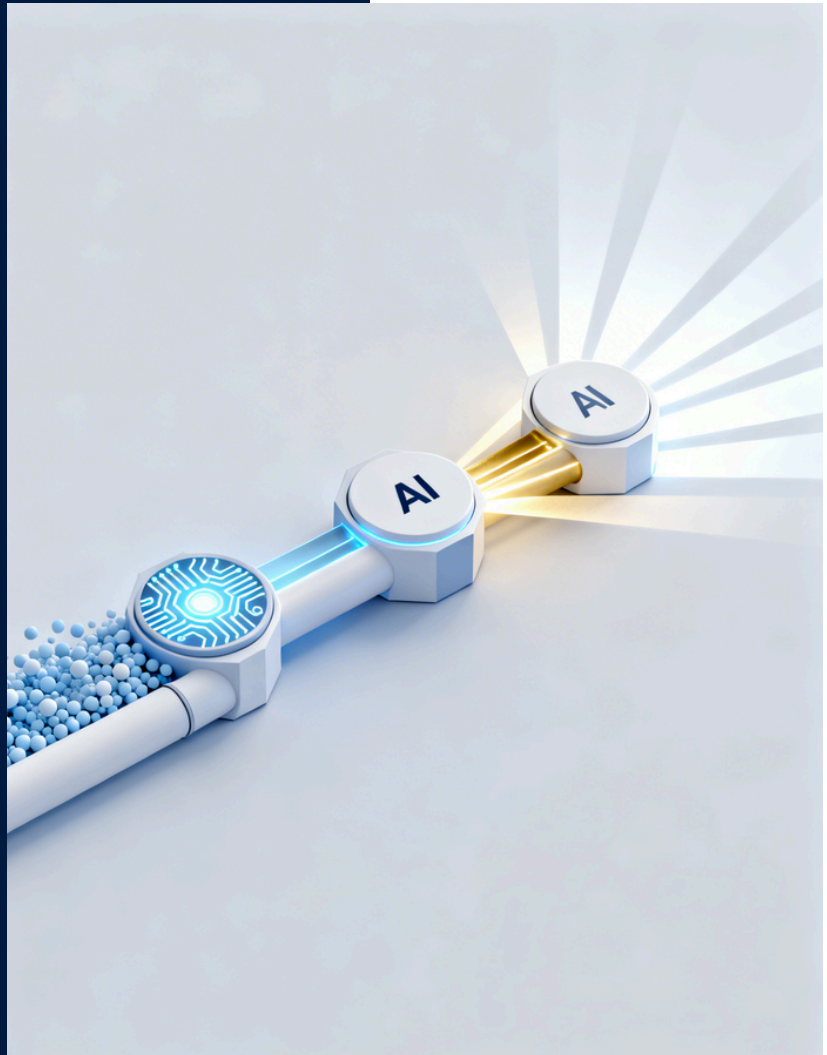
For years, AI investments were justified through cost reduction. Automation reduced manual effort, chatbots lowered service costs, and predictive systems optimized operations. The return was clear and financially measurable.

In 2026, that definition is no longer enough.

As AI becomes embedded into enterprise operations, its value is no longer limited to efficiency. Leading organizations are now measuring how AI enhances decision-making, strengthens resilience, accelerates innovation, and augments workforce capability. The conversation has shifted from cost savings to strategic impact.

How AI ROI is being redefined:

- Faster decision-making through real-time insights and predictive intelligence
- Reduced risk exposure with proactive threat detection and compliance readiness
- Accelerated innovation cycles with AI-assisted development and deployment
- Enhanced workforce productivity through intelligent augmentation



AI is no longer a standalone initiative. It is foundational to how enterprises operate and compete. As a result, traditional ROI models that focus only on financial savings fail to capture its full impact.

Forward-looking organizations are tracking metrics such as decision velocity, innovation throughput, and risk intelligence. These indicators may not always translate into immediate cost savings, but they directly influence market positioning, business resilience, and long-term growth.

At Skillmine, we help enterprises move beyond efficiency-led AI adoption to outcome-driven strategies that deliver measurable business value. The real ROI of AI lies not in what it saves, but in what it enables.

[Read our latest blog on how leaders are redefining AI ROI in 2026.](#)

Product Highlights



Product Evolution

Introduction of Action Hub, Custom Standards, Risk Matrix, and SLA-driven workflows to centralize governance and automate compliance operations

Impact: Improved decision velocity, enhanced accountability, reduced manual overhead, and stronger audit readiness



Product Advancements

- Companion App with QR-based, passwordless MFA, enhanced UI/UX, and multi-account support
- SSO Self-Service Portal enabling MFA setup, password reset, and profile management
- Bulk Role Updates for faster access governance
- QR-based MFA for secure, passwordless authentication

Impact: Accelerated access, reduced operational dependency, enhanced user experience, and stronger security controls

Project Progression (BFSI)

Phase 2 initiated with 9 critical applications now live, supported by SSO and MFA enforcement, with a stabilized production environment

Business Impact: Strengthened security posture, seamless access experience, improved operational stability, and tighter governance

Strategic Milestone

Now Available on GeM

Skillmine Auth is now listed on the Government e-Marketplace, enabling streamlined procurement for public sector organizations

Impact: Faster onboarding, simplified acquisition, and expanded adoption across government ecosystems



Product Highlights



Project Milestone

- Revamped user interface with improved usability
- Advanced dashboards with enhanced slicing capabilities
- Strengthened data ingestion for large datasets
- Migration to ClickHouse completed

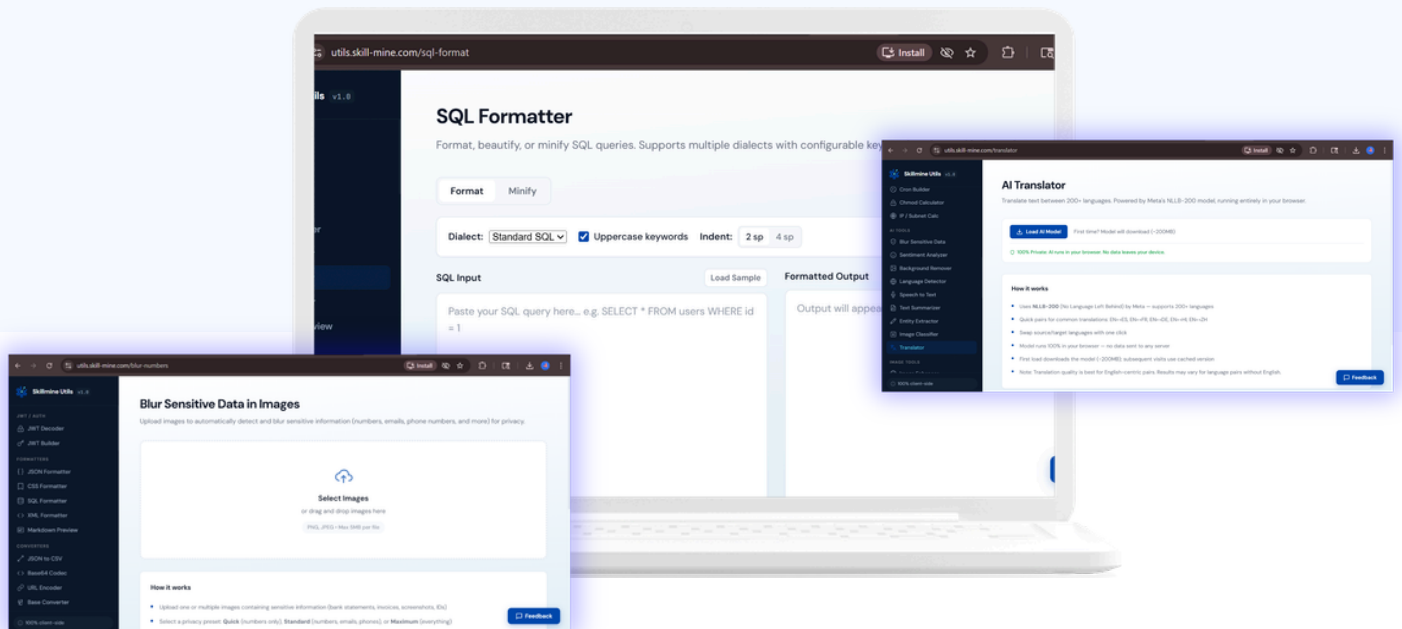
Business Impact: Improved user adoption, faster insights, enhanced performance at scale, and more efficient data handling

Introducing



Skillmine Utils is a newly launched developer utility platform designed to streamline workflows, enhance engineering productivity, and accelerate enterprise execution.

Explore the tools here: [Skillmine Utils](#) – Free Browser-Based Developer Utilities



Tech Baithak Podcast



Explore how India's Digital Public Infrastructure is evolving into a true Intelligence Stack through this conversation between **Ashwin Agrawal, Executive Director at Skillmine** and **Chirag Jain, Head and VP – DPI and Strategic Projects**.

Watch the full episode now to gain a strategic perspective on where AI-led financial ecosystems in India are headed.

Expert Insight

A seasoned Python practitioner, **Vimal Prakash, Director - Software Engineering, Skillmine** is known for applying technical depth to solve complex, real-world problems. This post examines Python's evolving role in enterprise environments and highlighting key trends.

Ship the Battle Group

Application code alone cannot survive production. This is the definitive guide to resilient architecture, enterprise-grade engineering, and the 23-component ecosystem required to navigate hostile waters.

The Myth	The Reality
<p>Bugs</p> <p>Traffic Spikes</p> <p>App Code</p> <p>Infrastructure Failures</p>	<p>Monitoring</p> <p>CI/CD</p>

INS Vikrant never sails alone. It deploys with destroyers, frigates, and submarines. **Do not ship the application code alone. Ship the battle group.**

[READ MORE](#)



ThoughtGrid

Stay informed with our latest ThoughtGrid blogs, featuring insights on evolving enterprise and technology landscapes.

The **RBI's 2FA mandate marks a significant step** towards strengthening digital trust, but it also brings new layers of complexity for enterprises managing identity, access and user experience.

Skillmine Technology breaks down the broader impact and what organizations need to consider as they adapt to evolving regulatory and security expectations.

Explore the full post for key takeaways.



Looking Ahead FY 2026–27

As we enter the new financial year, Skillmine remains focused on scaling AI-led innovation, strengthening cybersecurity frameworks, and advancing data-driven enterprise capabilities.

Our priority continues to be delivering structured, secure, and scalable solutions that align with evolving business and regulatory landscapes.

For more information
Contact: info@skill-mine.com
Visit us: skill-mine.com